

#### FEATURES

- 160,000 sq. ft.
- Major southeast Interconnection point
- Enterprise-grade security and redundancy

# Atlanta

56 Marietta Street, Atlanta, GA 30303

The Southeast's largest concentration of telecommunications companies can be found at the 56 Marietta St. facility, a premier, carrier-neutral colocation facility. This Data Center is strategically located on top of fiber running from Florida to New York and is a major interconnection point that provides businesses with network neutral access to hundreds of carriers.

## SPACE

### Building

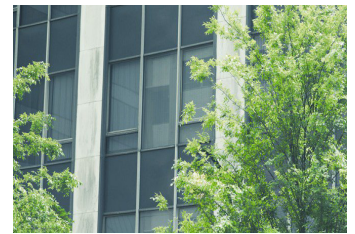
- 12 Levels, 2 Basements; 160,000 sq.ft.

### Flood Zone

- Zone X (Shaded): Outside 100-year flood plain

### Seismic

- Zone 2A



## POWER

### Utility Power Capacity

- 9,500 (kW)

### UPS Power Capacity

- 2,951 (kW)

### Power Density

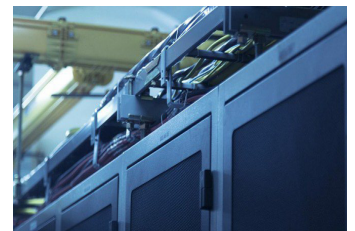
- 150-225 (W/sq.ft.)

### DC Power

- Available

### Generator Power Capacity

- 9,400 (kW)



# Atlanta

56 Marietta Street, Atlanta, GA 30303

## CONNECTIVITY

- Major southeast Interconnection point

### Fiber and Building Entry

- Multiple Diverse Entrances

### Peering Exchanges

- Telx Internet Exchange

## RELIABILITY

### UPS Power Redundancy

- N+1, 2N

### Generator Power Capacity

- 9,400 (kW)

### Generator Redundancy

- N, N+1

### Cooling Redundancy

- N+1

## SECURITY

- 24/7 Onsite Security Personnel
- CCTV Camera Systems - 90 Day Retention
- Biometric and Photo Badge Access
- Man Trap into the Data Center Suites
- Elevator Authentication

## COMPLIANCE

- SOC2, SOC3, HIPAA Compliant



## BUILDING STRUCTURE

### Roof

- Concrete Deck with Raised Steel Platform
- Roof Rights Available - ICB

### Floor Loading

- Up to 185 (lbs/sq.ft.)

### Parking

- Available

## COMPLIANT-READY SOLUTIONS



U.S. • EU  
**SAFEHARBOR**  
U.S. DEPARTMENT OF COMMERCE

**HIPAA**  
COMPLIANCE READY SOLUTIONS

**PCI** Security Standards Council  
COMPLIANCE READY SOLUTIONS

